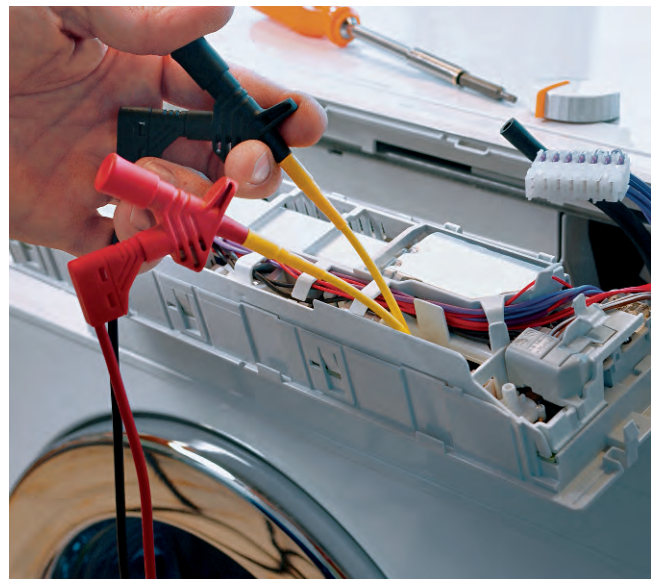
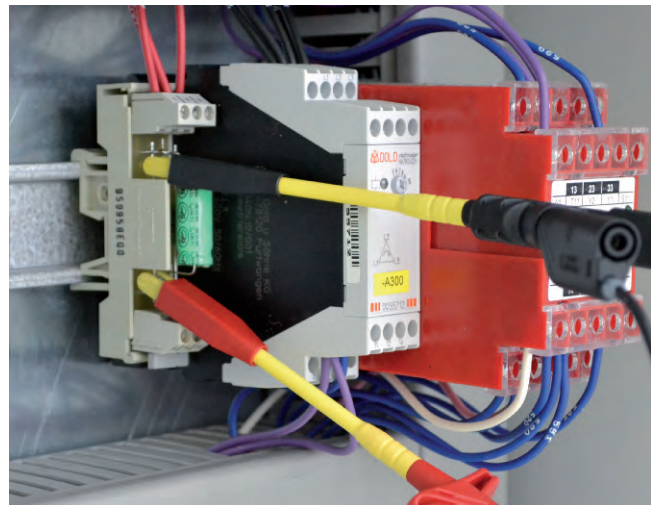


Plunger Style Test Clips



Altech Plunger Style Test clips are easy to work with Test & Measurement Tools. They can handle high voltages, allow accessing difficult to reach areas and keep your hands free for other tasks. The grabber can access every measurement point even on the smallest Device or PCB Board circuit. The KLEPS 2700 is patented and its stainless steel piercing tip allows access to the wire without stripping.

- Measuring “difficult to access” testing points
- Various designs for different applications
- Handle with multiple connection points
- Patented KLEPS 2700 with special design steel tip for accessing connected wire



Plunger Style Test Clips

0.64 mm System



Type

MICRO-KLEPS

Mini plunger style test probe with rotating pincers, insulated shaft bendable up to 35°, suitable for very thin wires and densely packed contact points, fits MKL and MAL leads.

KLEPS 3 ST

Mini plunger style test probe with rotating pincers, suitable for very thin wires and densely packed contact points, fits MKL and MAL leads.

Clamping range 2 mm (0.079")
Clamp type Rotating Pincers

Clamping range 3.5 mm (0.138")
Clamp type Rotating Pincers

PART NO. / Housing color
973972100 ●
973972101 ●

PART NO. / Housing color
973592100 ●
973592101 ●

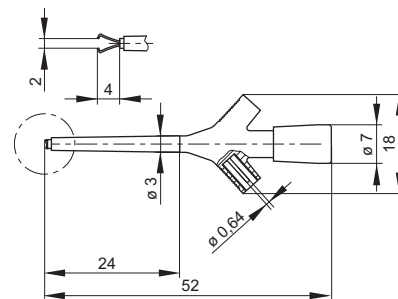
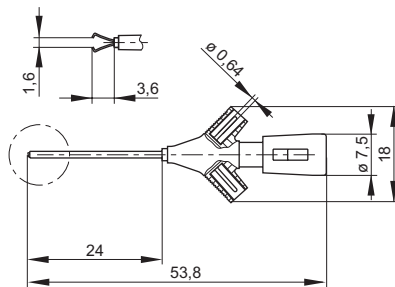
Technical Data

Connection Type	2x pin Ø 0.64 mm
Voltage Rating	30 VAC / 60 VDC
Measurement Category (IEC61010)	CAT I
Current Rating*	2 A
Contact Resistance	10 mOhm
Material Specifications	
Pincers/ hook	tin plated spring steel
Connection pin/ socket	nickel plated brass
Contact Spring	-
Housing	PBT
Environmental Conditions	
Temperature Range	-25 °C to +100 °C (13°F to 212°F)
Flamability Rating	
Housing	UL 94 HB

Connection Type	pin Ø 0.64 mm
Voltage Rating	30 VAC / 60 VDC
Measurement Category (IEC61010)	CAT I
Current Rating*	2 A
Contact Resistance	10 mOhm
Material Specifications	
Pincers/ hook	tin plated spring steel
Connection pin/ socket	nickel plated brass
Contact Spring	-
Housing	PBT
Environmental Conditions	
Temperature Range	-25 °C to +100 °C (13°F to 212°F)
Flamability Rating	
Housing	UL 94 HB

Drawing

Measurements are shown in millimeters.
Multiply by 0.03937 to convert to inches.



* Please consider derating graph on page 80.

Plunger Style Test Clips

0.64 mm System



Type



KLEPS FP 2B

For connecting to QFPIC's 0.5-0.8mm lead pitch. Slim design allows to test QFPIC's with several clips simultaneously, delivered in pairs of 2.

Clamping range 0.5 - 0.8 mm (0,020" - 0.031")
 Clamp type Micro grip jaws

Clamping range
 Clamp type

PART NO. / Housing color

974101188 ● ●



KLEPS 064 PCH

Compact design allows usage with very small components up to 1mm, fits MKL and MAL leads.

1 mm (0.039")
 contact hook

974201100 ●
974201101 ●
974201102 ●
974201103 ●
974201104 ●
974201106 ●
974201107 ○

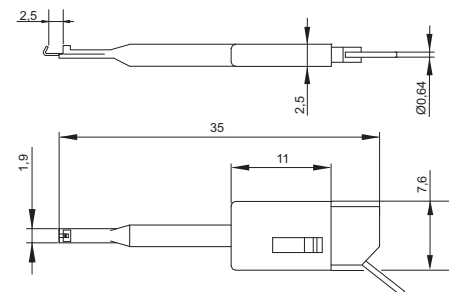
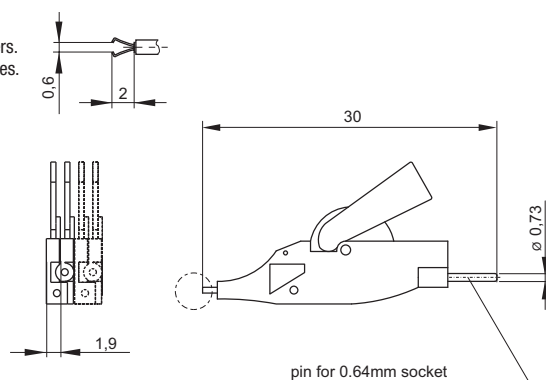
Technical Data

Connection Type	pin Ø0.73mm
Voltage Rating	30 VAC / 60 VDC
Measurement Category (IEC61010)	CAT I
Current Rating*	-
Contact Resistance	-
Material Specifications	
Pincers/ hook	nickel plated spring steel
Connection pin/ socket	-
Contact Spring	-
Housing	ABS
Environmental Conditions	
Temperature Range	0°C to +60 °C (32°F to 140°F)
Flamability Rating	
Housing	

pin Ø0.64mm
30 VAC / 60 VDC
CAT I
-
-
gold plated copper-beryllium
phosphor bronze
-
-
0°C to +70 °C (32°F to 158°F)

Drawing

Measurements are shown in millimeters.
 Multiply by 0.03937 to convert to inches.



* Please consider derating graph on page 80.

Plunger Style Test Clips 0.64 mm/4mm System



Type

KLEPS 2

Mini plunger style test probe with solder connection, gold plated phosphorus bronze contact hook for wires up to 2mm.

Clamping range 2 mm (0.079")
Clamp type contact hook

PART NO. / Housing color **931467100** ●
931467101 ●



KLEPS 2 BU

Mini plunger style test probe with 2mm socket terminals, gold plated phosphorus bronze contact hook for wires up to 2mm, gold plated contact spring.

Clamping range 2 mm (0.079")
Clamp type contact hook

PART NO. / Housing color **973501100** ●
973501101 ●

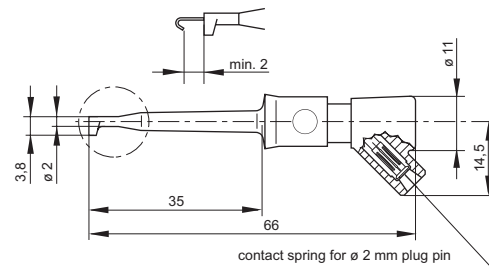
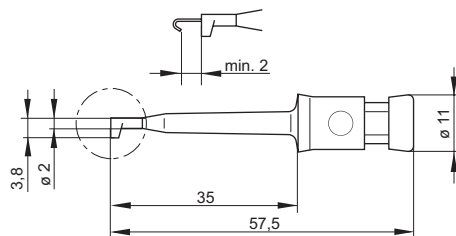
Technical Data

Connection Type	Solder Terminal
Voltage Rating	30 VAC / 60 VDC
Measurement Category (IEC61010)	CAT I
Current Rating*	6 A
Contact Resistance	15 mOhm
Material Specifications	
Pincers/ hook	gold plated phosphorous bronze
Connection pin/ socket	-
Contact Spring	-
Housing	Polyamide
Environmental Conditions	
Temperature Range	-25 °C to +100 °C (13°F to 212°F)
Flamability Rating	
Housing	UL 94 V-2

Connection Type	Spring-loaded socket Ø 2 mm
Voltage Rating	30 VAC / 60 VDC
Measurement Category (IEC61010)	CAT I
Current Rating*	6 A
Contact Resistance	15 mOhm
Material Specifications	
Pincers/ hook	gold plated phosphorous bronze
Connection pin/ socket	-
Contact Spring	gold plated copper-beryllium
Housing	Polyamide
Environmental Conditions	
Temperature Range	-25 °C to +100 °C (13°F to 212°F)
Flamability Rating	
Housing	UL 94 V-2

Drawing

Measurements are shown in millimeters.
Multiply by 0.03937 to convert to inches.



* Please consider derating graph on page 80.

Plunger Style Test Clips 2 mm/4mm System



Type



KLEPS 1600

Safety plunger style test probe with rotating pincers and flexible shaft. Special design of pincers allows clamping wires up to 4mm, 2mm gold plated brass socket terminal.



KLEPS 30

Plunger style test probe with rotating pincers and flexible shaft. Special design of pincers allows clamping wires up to 4mm, 4mm brass socket and screw terminals.



KLEPS 60

Plunger style test probe with rotating pincers and flexible shaft. Special design of pincers allows clamping wires up to 4mm, 4mm brass socket and screw terminals.

Clamping range
Clamp type

3 mm (0.118")
rotating pincers

4 mm (0.157")
rotating pincers

4 mm (0.157")
rotating pincers

PART NO. / Housing color

975106100 ●
975106101 ●

930113100 ●
930113101 ●

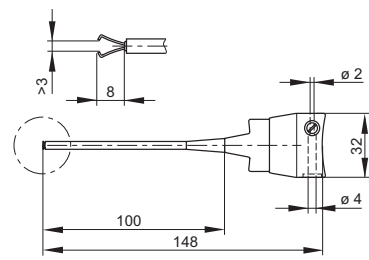
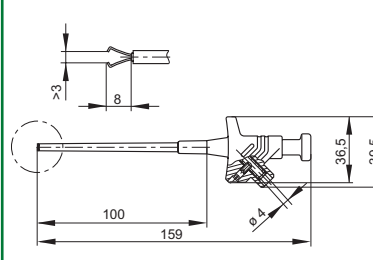
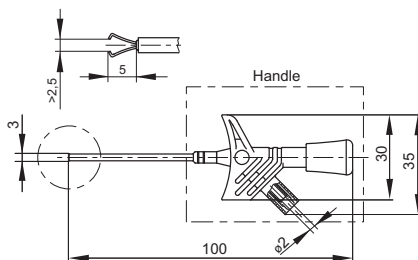
973053100 ●
973053101 ●

Technical Data

Connection Type	Socket Ø2 mm	Socket Ø 4 mm, screw terminal	Socket Ø 4 mm, screw terminal
Voltage Rating	AC/DC 1000V	30 VAC / 60 VDC	30 VAC / 60 VDC
Measurement Category (IEC61010)	CAT III	CAT I	CAT I
Current Rating*	3 A	4 A	4 A
Contact Resistance	50 mOhm	50 mOhm	50 mOhm
Material Specifications			
Pincers/ hook	nickel plated spring steel	nickel plated spring steel	nickel plated spring steel
Connection pin/ socket	gold plated brass	brass	brass
Contact Spring	-	-	-
Housing	Polyamide	PF	PP, PS
Environmental Conditions			
Temperature Range	-25 °C to +70 °C (13°F to 158°F)	-25 °C to +80 °C (13°F to 176°F)	-25 °C to +60 °C (13°F to 140°F)
Flammability Rating			
Housing	UL 94 V-2	UL 94 V-0	UL 94 HB

Drawing

Measurements are shown in millimeters.
Multiply by 0.03937 to convert to inches.



* Please consider derating graph on page 80.

For the latest on Altech Test & Measurement specifications please visit www.altechcorp.com/test-equipment

Plunger Style Test Clips 4mm System



Type

KLEPS 250

Touch proof plunger style test probe with rotating pincers and flexible shaft, allows to clamp wires up to 4mm, 4mm brass socket, fits MLN and MLB leads.

Clamping range 4 mm (0.157")
Clamp type rotating pincers

PART NO. / Housing color **973528100** ●
973528101 ●



KLEPS 2600

Safety plunger style test probe with rotating pincers and flexible shaft, allows to clamp wires up to 4mm, 4mm brass socket.

Clamping range 4 mm (0.157")
Clamp type rotating pincers

PART NO. / Housing color **972306100** ●
972306101 ●

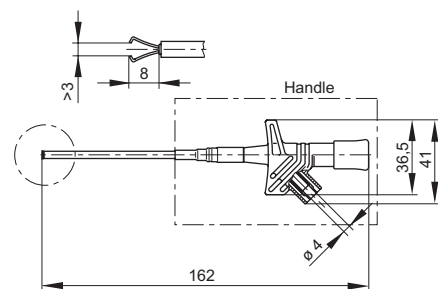
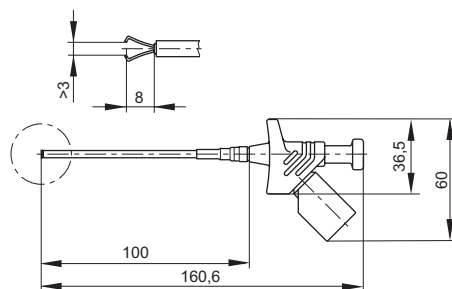
Technical Data

Connection Type	socket Ø 4 mm
Voltage Rating	30 VAC / 60 VDC
Measurement Category (IEC61010)	CAT I
Current Rating*	4 A
Contact Resistance	100 mOhm
Material Specifications	
Pincers/ hook	nickel plated spring steel
Connection pin/ socket	nickel plated brass
Contact Spring	-
Housing	PF
Environmental Conditions	
Temperature Range	-25 °C to +80 °C (13°F to 176°F)
Flamability Rating	
Housing	UL 94 V-0

Connection Type	socket Ø 4 mm
Voltage Rating	AC/DC 1000 V
Measurement Category (IEC61010)	CAT III
Current Rating*	4 A
Contact Resistance	50 mOhm
Material Specifications	
Pincers/ hook	nickel plated spring steel
Connection pin/ socket	nickel plated brass
Contact Spring	-
Housing	PBT
Environmental Conditions	
Temperature Range	-25 °C to +80 °C (13°F to 176°F)
Flamability Rating	
Housing	UL 94 HB

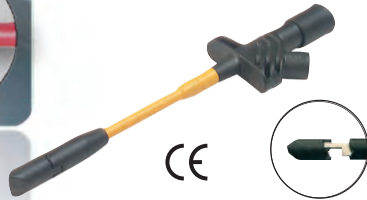
Drawing

Measurements are shown in millimeters.
Multiply by 0.03937 to convert to inches.



* Please consider derating graph on page 80.

Plunger Style Test Clips 4 mm Safety System



KLEPS 2700

Safety plunger style test probe with spring loaded stainless steel tip, for wires up to 3.5mm, no stripping necessary, 4mm brass socket.



KLEPS 2800

Safety plunger style test probe with wide opening alligator clip, for wires and areas with large cross sections, fits safety measurement leads.



KLEPS 2900

Safety plunger style test probe with stationary contact hook, fits safety measurement leads.

Type

Clamping range 3.5 mm (0.138")
Clamp type spring-loaded stainless steel tip

PART NO. / Housing color **972307100** ●
972307101 ●

Clamping range 10 mm (0.394")
alligator clips

PART NO. / Housing color **972308100** ●
972308101 ●

Clamping range 5.5 mm (0.217")
contact hook

PART NO. / Housing color **972309100** ●
972309101 ●

Technical Data

Connection Type socket Ø 4 mm
Voltage Rating AC/DC 1000 V
Measurement Category (IEC61010) CAT III
Current Rating* 10 A
Contact Resistance 100 mOhm

Material Specifications

Pincers/ hook stainless steel
Connection pin/ socket nickel plated brass
Contact Spring -
Housing PBT

Environmental Conditions

Temperature Range -25 °C to +80 °C (13°F to 176°F)

Flamability Rating

Housing UL 94 HB

Connection Type socket Ø 4 mm
Voltage Rating AC/DC 1000 V
Measurement Category (IEC61010) CAT III
Current Rating* 20 A
Contact Resistance 100 mOhm

Pincers/ hook nickel plated spring steel
Connection pin/ socket nickel plated brass

Housing PBT

Temperature Range -25 °C to +80 °C (13°F to 176°F)

Housing UL 94 HB

Connection Type socket Ø 4 mm
Voltage Rating AC/DC 1000 V
Measurement Category (IEC61010) CAT III
Current Rating* 20 A
Contact Resistance 50 mOhm

Pincers/ hook nickel plated brass
Connection pin/ socket nickel plated brass

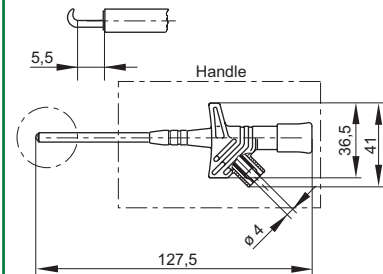
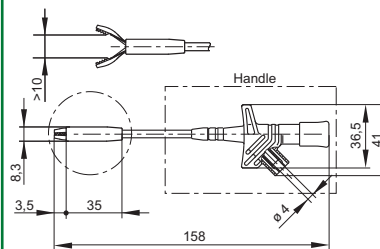
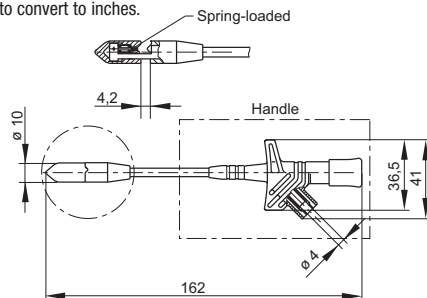
Housing PBT

Temperature Range -25 °C to +80 °C (13°F to 176°F)

Housing UL 94 HB

Drawing

Measurements are shown in millimeters.
Multiply by 0.03937 to convert to inches.



* Please consider derating graph on page 80.